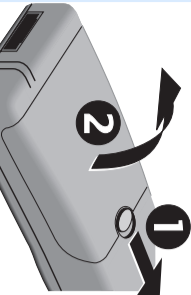


SIM Card / Battery

Insert SIM Card

Your Service Provider will supply a SIM card, containing your phone number and billing details. It may be used in other GSM phones. You may need to carefully snap this out from a credit card sized SIM.

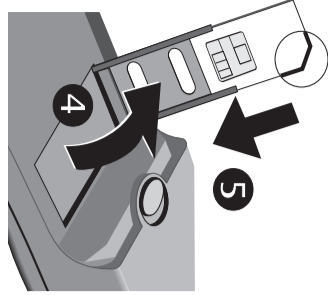
- Remove battery if fitted (1,2).



- Unlock SIM carrier by sliding top as shown (3).



- Swing up carrier (4) then slide in SIM card (5). Ensure angled corner is as shown.



- Swing down carrier (reverse of 4), ensure it fits flush.

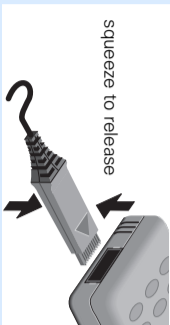
- Lock carrier** (reverse of 3), listen for click.
- Refit battery, locating bottom end, then swinging in top until clicks.

If removing battery ensure phone is switched off first.

Charge battery

Your new Lithium Ion battery will not be fully charged:

- Insert charger plug into socket in base (arrow facing up).



- Plug charging unit into mains power socket (ensure voltage range stated on charger is not exceeded).

- Allow approximately 1 hour for maximum charge.

Your display shows

- charging status and
- charging level.

You may use your phone whilst charging.

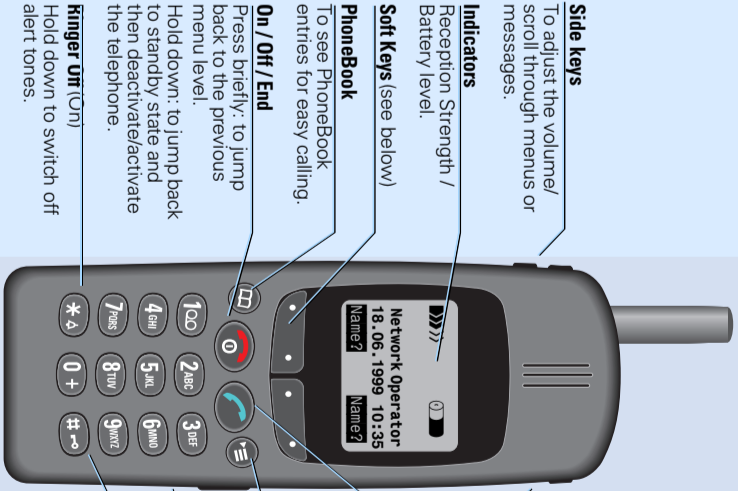
Usage Time

A full charge can provide up to 200 hours standby, or up to 5 hours talk-time, but dependant on network environment, SIM card and services used, lower times will be expired.

RÜCKSEITE

VORDERSEITE

Overview



Side keys

To adjust the volume/scroll through menus or messages.

Indicators

Reception Strength / Battery level.

Soft Keys (see below)

PhoneBook

To see PhoneBook entries for easy calling.

On / Off / End

Press briefly: to jump back to the previous menu level.

Hold down: to jump back to standby state and then deactivate/activate the telephone.

Kinger On (Un)

Hold down to switch off alert tones.

Voice Memo (on side)

Hold in to record, (even during a call). Press briefly to play.

Call

Dials displayed number or name, also answers calls. When in standby it lists last calls dialled.

Menu

To set up and control net-work and phone features.

Infrared Port

(for PC communication)

Key Lock (Unlock)

Hold down to prevent accidental use.

Soft Keys

The current function(s) are shown above in the display, in some cases, eg scrolling, the left and right hand end of the key offer different functions.

In standby, the soft keys enable fast 'name' dialling, or may have special services (eg Applications).

